

# > marketplace

To Advertise Contact  
Kimberly Lopez, ext. 263  
@ 949.833.8373

IT Business Systems Engineer IV wanted in Irvine, CA. Dsgn, configure & integrate complex IT systems solutions & architectural frameworks into bus. systems & organizations. Ensure the stability, integrity, & efficient operation of the in-house info systems that support core organizational functions. SALARY: \$132,273/yr. Bachelor's deg in Info Systems, Info Technology or a rlted deg discipline followed by 8 yrs of progressive exp in the specialty field or IN THE ALTERNATIVE a Master's deg in Info Systems, Info Technology or a rlted deg discipline & 6 yrs of rlted exp. Mail resumes to: Panasonic Avionics Corporation, ATTN: G. Moreno (RA), 3347 Michelson Dr, Irvine, CA 92612.



Professionals in The Field Of Commercial Real Estate Since 1987



Massy Farzine

**CLIENT Centered.  
REFERRAL Built.**



OFFICE / BUSINESS CENTERS



RETAIL



INDUSTRIAL



TRANSACTIONAL SALES



M.P.

"Whether you handled our multi-family and office investments or our personal properties, your professionalism, dedication, and utmost loyal to protect our interests were impeccable."



R.A.

"The professionalism of your firm handling this transaction was impeccable and allowed my company to feel comfortable and confident purchasing this \$40mm+ asset."

ESDIcorp.com

949.252.5330

info@esdicorp.com



FLORAL CREATIONS  
BY ENZO

When Only  
the BEST Blooms  
Will Do



714.751.2160

floralcreationsbyenzo.com

3100 Airway Avenue | #141 | Costa Mesa CA 92626

Exclusive Awards Provider for the  
**ORANGE COUNTY BUSINESS JOURNAL**



**TUSTIN  
AWARDS**

714.247.2277  
tustinawards.com

- Corporate Recognition
- Promotional Products

EXCEPTIONAL AWARDS SINCE 1978



OWNERS - MARY & JAKE HILL

## > marketplace

The smart way to grow  
your business

To Advertise Contact  
Kim Lopez, ext. 263  
@ 949.833.8373



# > marketplace

To Advertise Contact  
Kimberly Lopez, ext. 263  
@ 949.833.8373

Systems Engineer, Irvine, CA. Lead the support efforts for projects & dvlpmt of airborne eqpmt for new or enhanced inflight connectivity prgms incl reqmts definition, documentation & communication of reqmts, both internally & externally w/ customers. Bachelor's deg in Mechanical Engg, Aerospace Engg, or rlted deg concentration followed by 10 yrs of progressive exp in the specialty field. Salary \$136,989/YR. Mail resumes to: Panasonic Avionics Corporation, G. Moreno (RC), 3347 Michelson Dr, Ste 100, Irvine, CA 92612.

Manager, Customer Support Field Engineer, HQ in Irvine, CA - Telecommute Position. Oversee a team of Customer Support Field Engineers to ensure total customer satisfaction w/in assigned region. Ensure the co. meets its obligations & commitments to regional customers by responding to tech'l problems & queries in an accurate & timely manner. SALARY: \$129,240/yr. Bach's deg in Engg, Comp Sci, or a related deg concentration followed by 5 yrs of progressive exp in the specialty field. Domestic & int'l travel may be reqd. Mail resumes to: Panasonic Avionics Corporation ATTN: G. Moreno (SF), 3347 Michelson Dr, Irvine, CA 92612.

## LA MIRADA EXECUTIVE SUITES

SERVICING BOTH OC AND LA COUNTIES OFF THE 5 FREEWAY



GET IN TOUCH TODAY! ☎ 562.293.4000 🌐 lamiradaoffices.com

Private Offices  
Virtual Plans  
Flexible Terms

Mail Services  
Ample Free Parking  
Full-Time Admin Support

4 Meeting Spaces  
Training Room  
Kitchen/Lounges



## NEWPORT EXECUTIVE CENTER

GET IN TOUCH TODAY! ☎ 949.999.0899 🌐 newportexecutivecenter.com



- 1**  
Mail Services
- 4**  
Meeting Rooms
- 2**  
Kitchens Lounges
- 24/7**  
Building Access

Prime Location in Fashion Island  
Private Offices - Ocean Views  
Virtual Plans  
Ample Free Parking  
Full-Time Admin Support  
Lounges



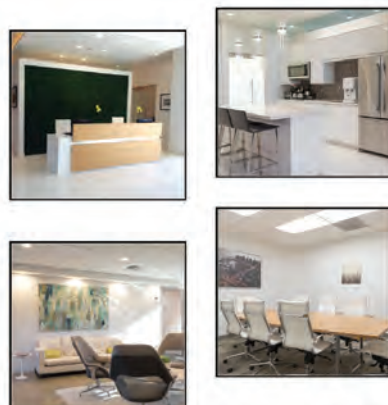
**THINK BIG.**  
Start Small



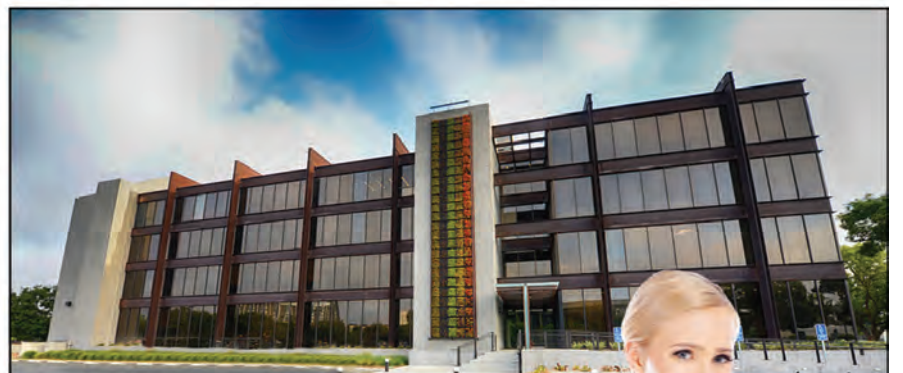
A small ad in the OCBJ MARKETPLACE can make a big impact on your business.  
Contact Kim Lopez | 949.664.5068  
lopez@ocbj.com

## 2082 MICHELSON BUSINESS CENTER

Private Offices  
Virtual Plans  
Flexible Terms  
Free Parking  
Full-Time Admin Support  
Located Next to JWA



- 1**  
Mail Room
- 3**  
Meeting Rooms
- 2**  
Kitchens/Lounges
- 24/7**  
Building Access



GET IN TOUCH TODAY!

☎ 949.955.1505

🌐 2082michelsonbusinesscenter.com



